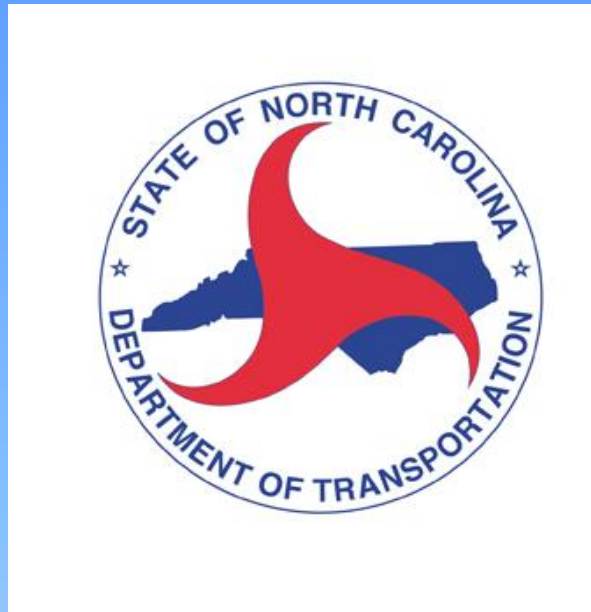


Mecklenburg-Union MPO Orientation

January 11, 2012



TRANSPORTATION PLANNING BRANCH



Connecting people and places in North Carolina – safely and efficiently, with accountability and environmental sensitivity.

Did You Know?

That North Carolina has the second largest state highway network in the country

79,009 road miles

158,592 paved lane miles

6,644 miles of unpaved roads

17,756 structures



Did You Know?

That in 1974 North Carolina established the first state bicycle program in the nation

Bicycle and Bikeway Act of 1974*

With the passage of comprehensive Bicycle and Bikeway Act of 1974, North Carolina established the first state bicycle program in the nation, which quickly became a national model.



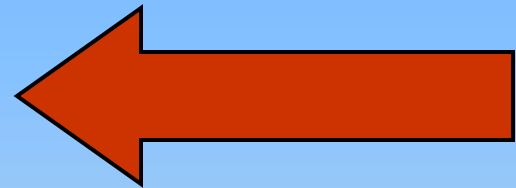
NCDOT – Divisions



Division of Highways

Some of the units of the division that MPO's interact with

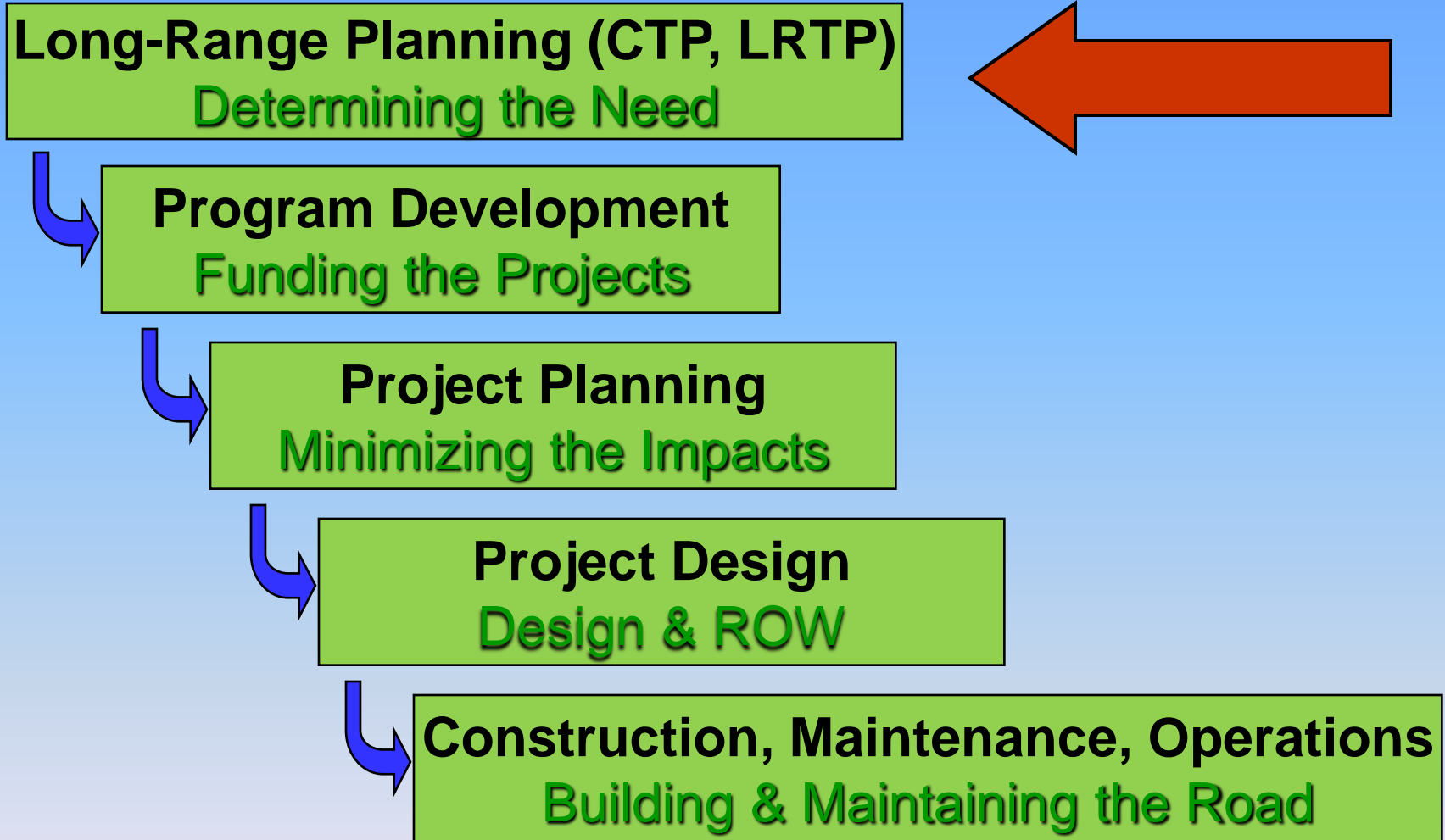
Transportation Planning Branch



Division Office

Right of Way Branch

Where is Transportation Planning within NCDOT?



Transportation Planning Branch

Coordinate with MPOs to carry out the 3-C process (Continuing, Cooperative and Comprehensive)

Develop Comprehensive Transportation Plans (CTP)

Administer the planning funds to MPO's & RPO's

Assist with the Air Quality Conformity Process

Develop and Maintain Travel Demand Models

Perform Traffic Forecasts for projects

Collection of Traffic Count Data

Coordinate with the RPOs

Comprehensive Transportation Plan

Replaces Thoroughfare Plans

What is a CTP?

CTP = Comprehensive Transportation Plan

Long-Range multi-modal transportation plan.

Developed cooperatively with NCDOT and the MPO, County and Municipality.

CTP emphasizes incorporating local land use plans and community and statewide goals and objectives (like Strategic Corridors).

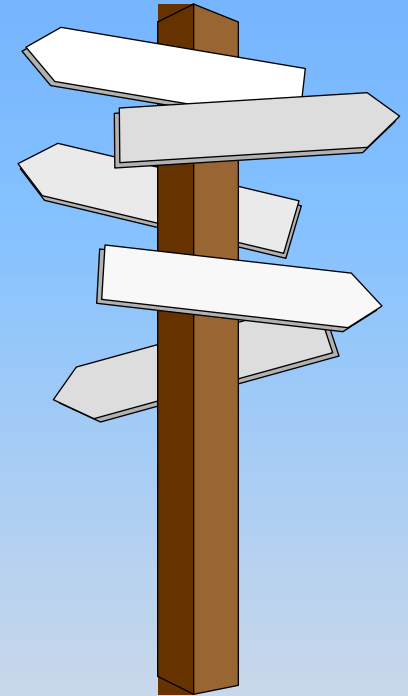
CTP recommendations are Concepts and any project will go through a rigorous environmental process before final alignments or designs can be determined.

CTP can be used in the same way as Thoroughfare Plan for local land use planning (protection of ROW, etc.).

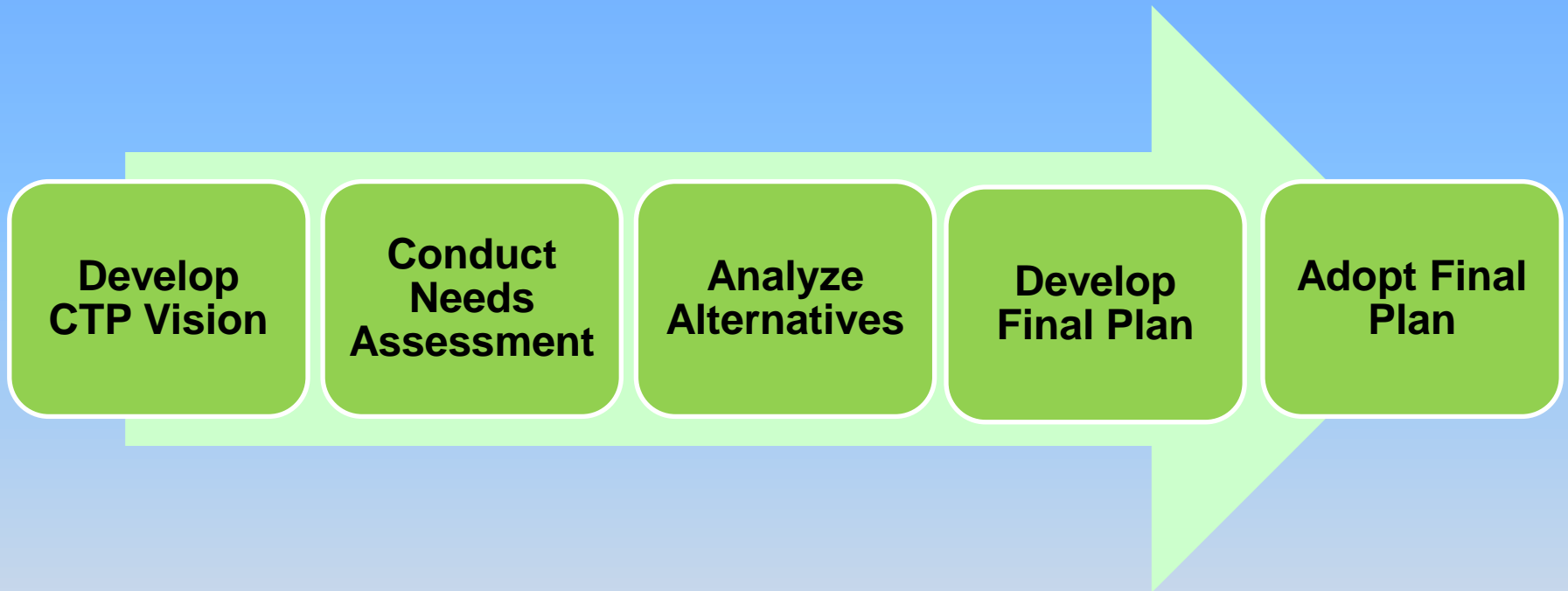
Why a Comprehensive Transportation Plan?

§ 136-66.2. Development of a coordinated transportation system and provisions for streets and highways in and around municipalities.

Each municipality or County, not located within a metropolitan planning organization (MPO) and each MPO, with the cooperation of the Department of Transportation, shall develop a comprehensive transportation plan that will serve present and anticipated travel demand in and around the municipality.



CTP Process



The CTP's final products

Adoption Sheet

Four Maps (not including adoption sheet)

Highway Map

Public Transportation and Rail Map

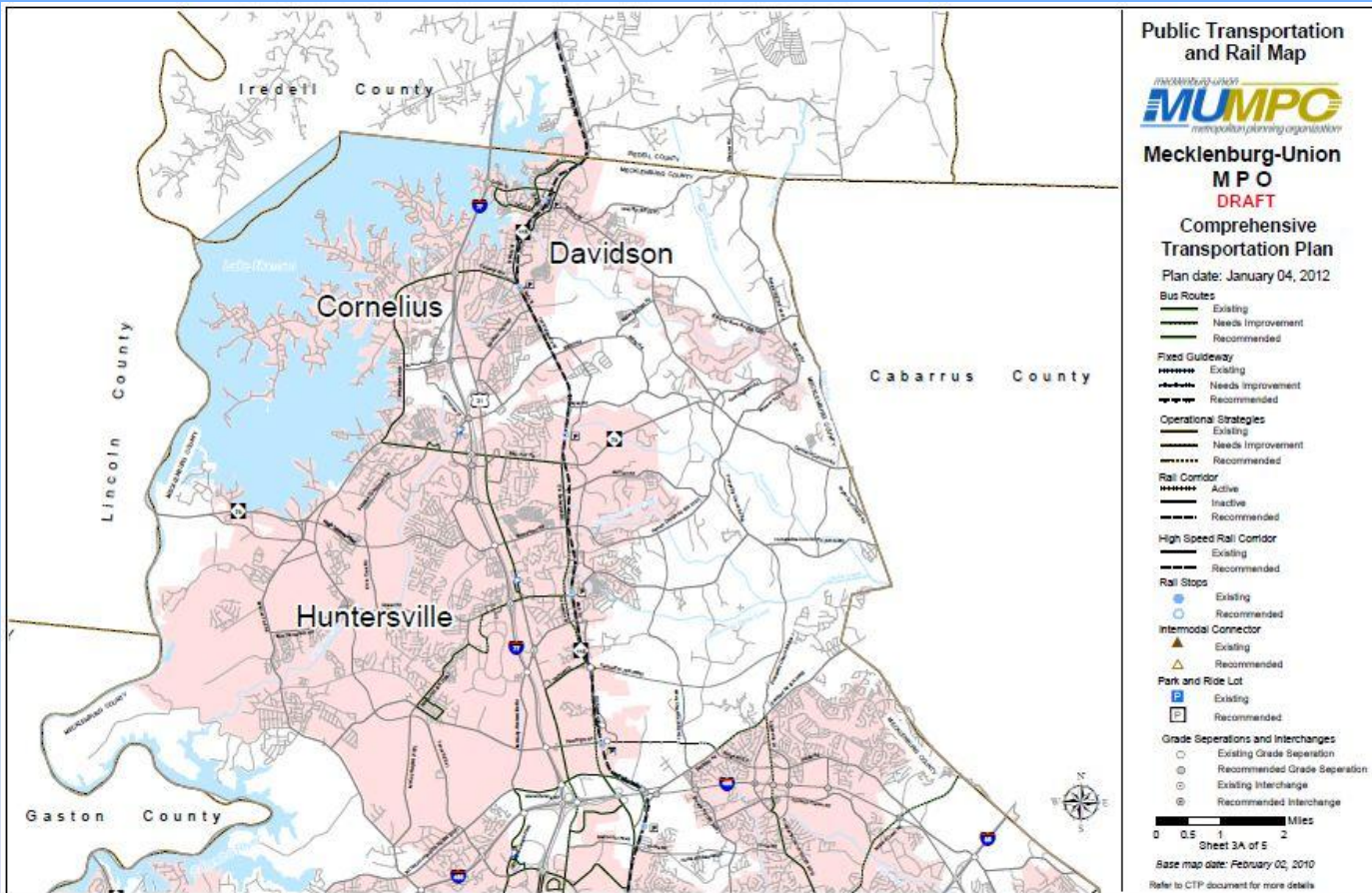
Bicycle Map

Pedestrian Map

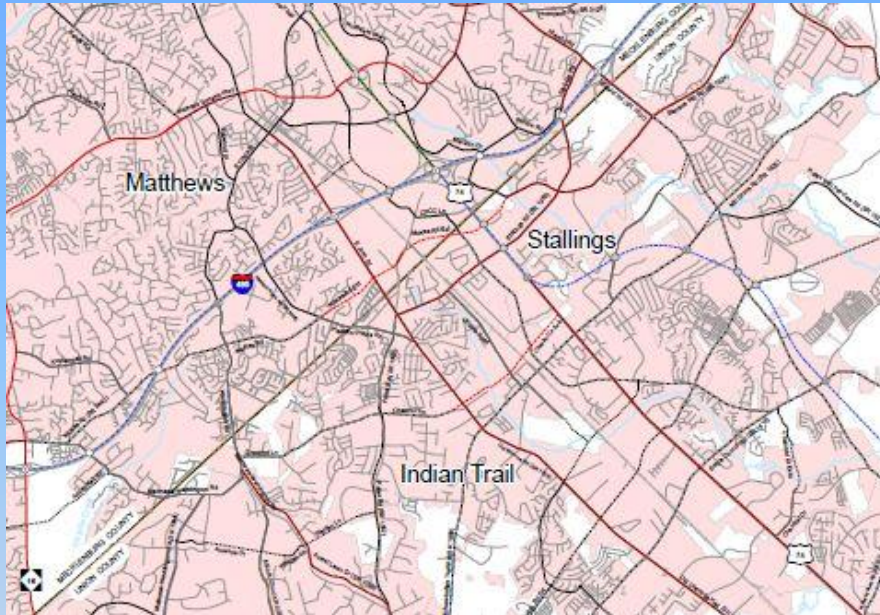
Technical Report



CTP Public Transportation Map Example

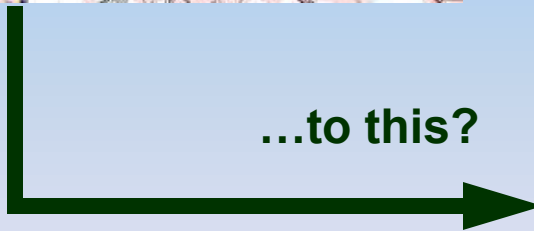


How do you get...



...from this...

...to this?



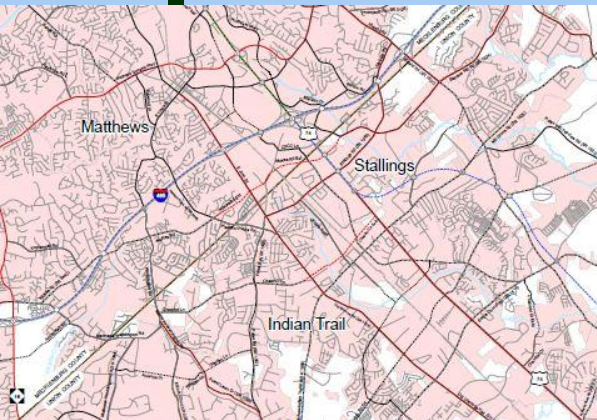
Plan to Product

Comprehensive Transportation Plan

Long Range Transportation Plan

Transportation
Improvement
Program

Product
Delivery



TRANSPORTATION PLANNING BRANCH

Plan Comparison

	Adopted by MPO	Adopted by NCDOT BOT	Financially Constrained	A/Q Conformity Analysis Required	Approximate Plan Horizon
Comprehensive Transportation Plan (CTP)	Yes	Yes	No	No	~30 Years
Long Range Transportation Plan (LRTP)	Yes	No	Yes	Yes, for non-attainment areas	20 Year Minimum
Transportation Improvement Program (TIP)	Yes, MTIP	Yes, entire STIP	Yes	Yes, for non-attainment areas	7 Years

Questions★

